

# VK-CM-RZ/G2LC

## ver. 1.0

Renesas Electronics RZ/G2LC  
Dual core ARM Cortex-A55, Cortex-M33

**R9A07G044C22GBG**

- 1.2GHz, 361pins BGA, Fanless

**On board RAM**

- 2GB DDR4, 1.6GHz

**On board ROM**

- 32MB QSPI, 133MHz, NOR Flash
- 32GB eMMC, 200MHz, NAND Flash

**WiFi + BLE**

- module Type 1DX

**Ethernet**

- 1x PHY RTL8211F

**Connectors**

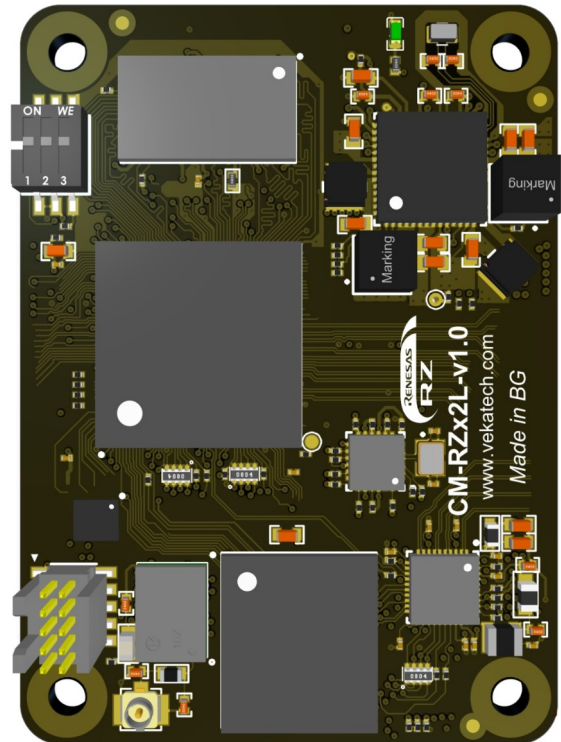
- 1x JTAG (10pin)
- 2x Molex (100pin)

**Operating temperature:**

- -40° ... +85°

**Dimensions:**

- 40 mm x 55 mm
- Mounting holes 4 x Ø3,5 mm



**PRELIMINARY**