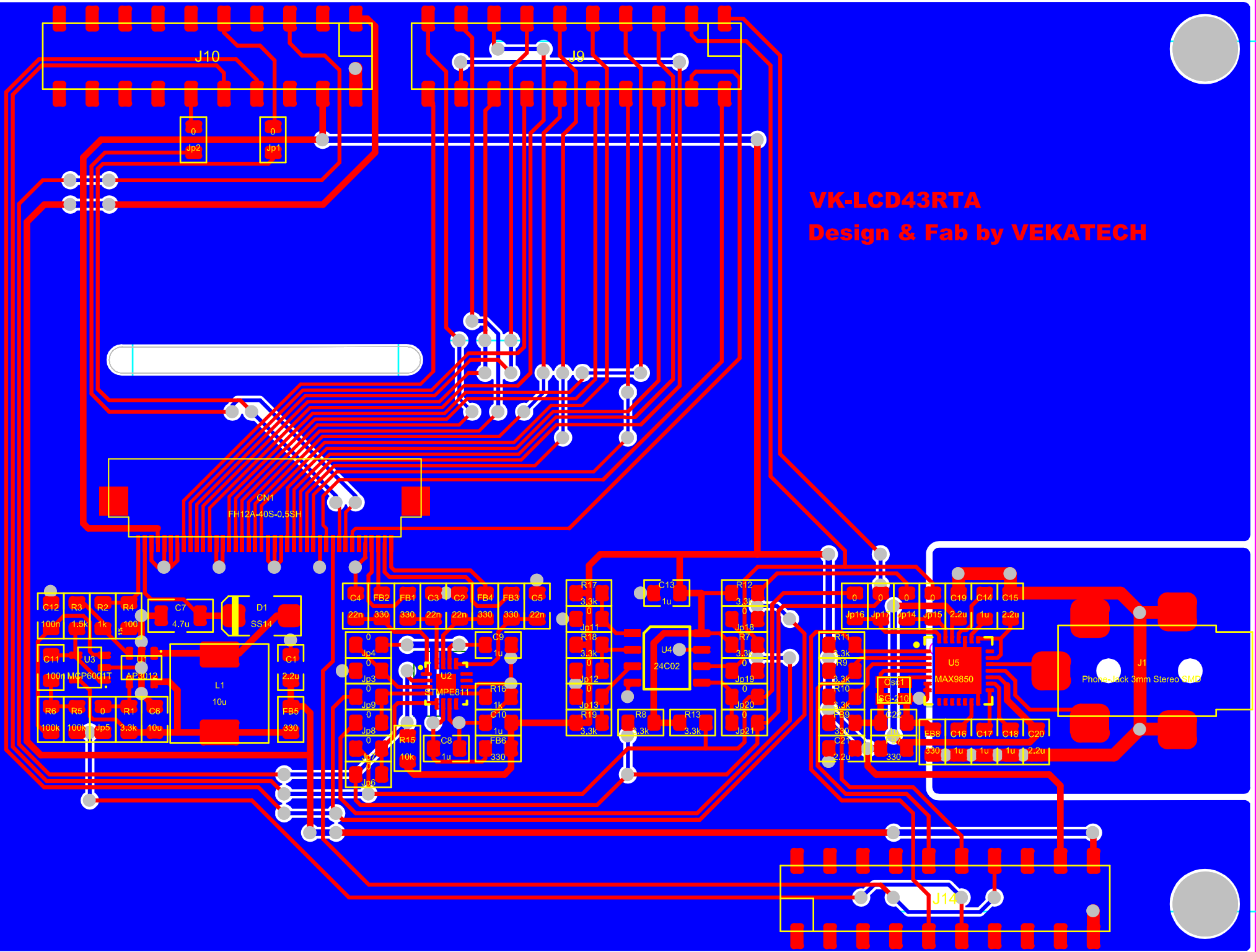


**VK-LCD43RTA**  
Design & Fab by VEKATECH



Designator	Comment	Description	Http	Part №	Quantity
C1, C15, C19, C20, C21	2.2u	SMD-0805 16V Y5V +80/-20%			5
C2, C3, C4, C5	22n	SMD-0805 50V X7R 10%			4
C6	10u	SMD-0805 6.3V Y5V +80/-20%			1
C7	4.7u	SMD-1206 50V X7R +10%			1
C8, C9, C10, C13, C14, C16, C17, C18, C22	1u	SMD-0805 16V X7R 10%			9
C11, C12	100n	SMD-0805 50V Y5V +80/-20%			2
CN1	FH12A-40S-0.5SH				1
D1	SS14	SMD SMA 40V 1A			1
FB1, FB2, FB3, FB4, FB5, FB6, FB7, FB8, FB9	330	0805 1.5A 0.09ohm			9
J1	Phone-Jack 3mm Stereo SMD		<a href="http://store.comet.bg/Catalogue/Product/5008940/">http://store.comet.bg/Catalogue/Product/5008940/</a>	1503 03	1
J9, J10, J14	PN-2x10 SMD				3
Jp1, Jp2, Jp3, Jp4, Jp5, Jp6, Jp7, Jp8, Jp9, Jp11, Jp12, Jp13, Jp14, Jp15, Jp16, Jp17, Jp18, Jp19, Jp20, Jp21	0	SMD-0805 0-om			20
L1	10u	2.1A 0.08om 7x7x3.2mm			1
LCD1	LCD 4.2				1
Osc1	SG-210		<a href="https://www.rutronik24.com/product/epson/x1g004481000112/5444931.html">https://www.rutronik24.com/product/epson/x1g004481000112/5444931.html</a>	EPSON X1G00448100011 2	1
R1, R7, R8, R9, R10, R11, R12, R13, R17, R18, R19	3.3k	SMD 0805 0.1W 5% 150V			11
R2, R16	1k	SMD 0805 0.1W 5% 150V			2
R3	1.5k	SMD 0805 0.1W 5% 150V			1
R4	100	SMD 0805 0.1W 1% 150V			1
R5, R6	100k	SMD 0805 0.1W 5% 150V			2
R15	10k	SMD 0805 0.1W 5% 150V			1
U1	AP3012	Vin-2.6-16V Vout-29V Fb-1.25V I <sub>max</sub> -0.5A			1
U2	STMPE811				1
U3	MCP6001T	4.5mV 1MHz 0.6V/us 1.8-6V R/R In/Out 100uA			1
U4	24C02				1
U5	MAX9850				1